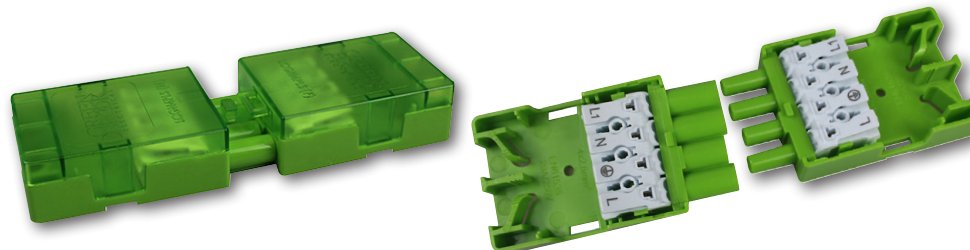


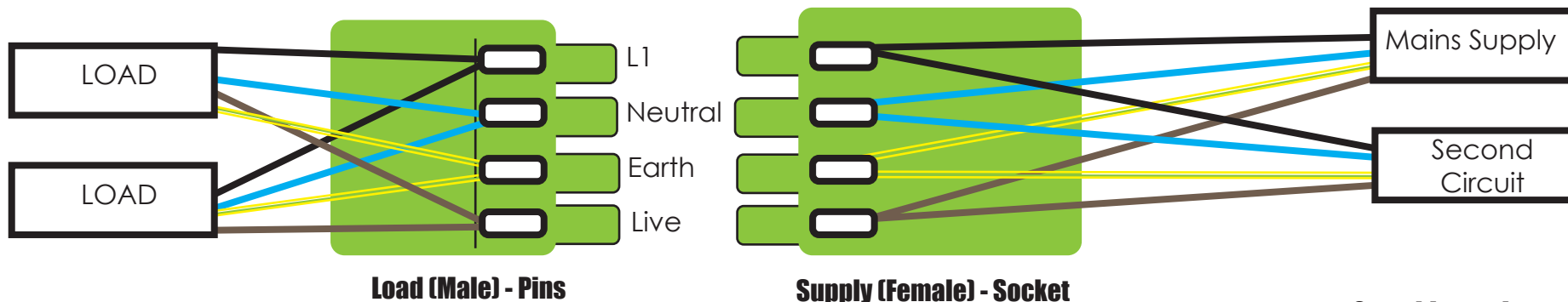
NORSLO

QUICK
Connekt +4

Wiring Diagram



LCGN4PLS - Wiring (Quick push-fit terminals)



2 x cable entries
Each Terminal can be fitted
with upto
2 x 2.5mm² Solid 4 Core Max
or
2 x 2.5mm² 3 Core Flex

Note: Moulding states '4 x 2.5mm²' - this means 4 core 2.5mm² cable can be used.

2 x cable entries
Each Terminal can be fitted
with upto
2 x 2.5mm² Solid 4 Core Max
or
2 x 2.5mm² 3 Core Flex

